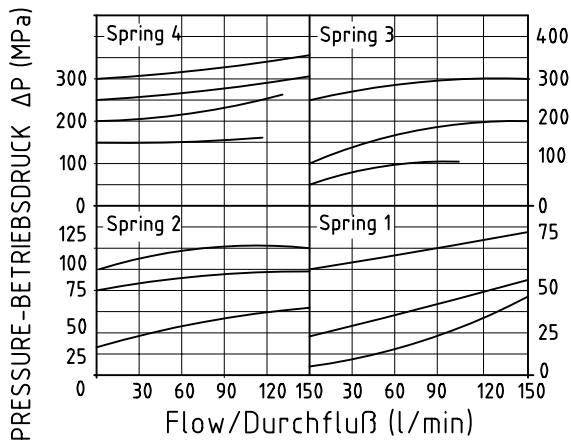


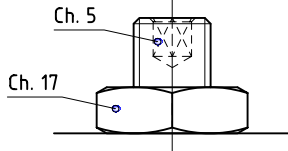
GVS-DI-150-31

TECHNICAL DATA
TECHNISCHE ANGABEN

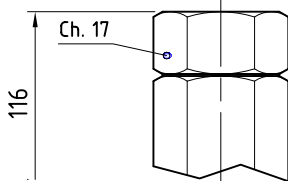
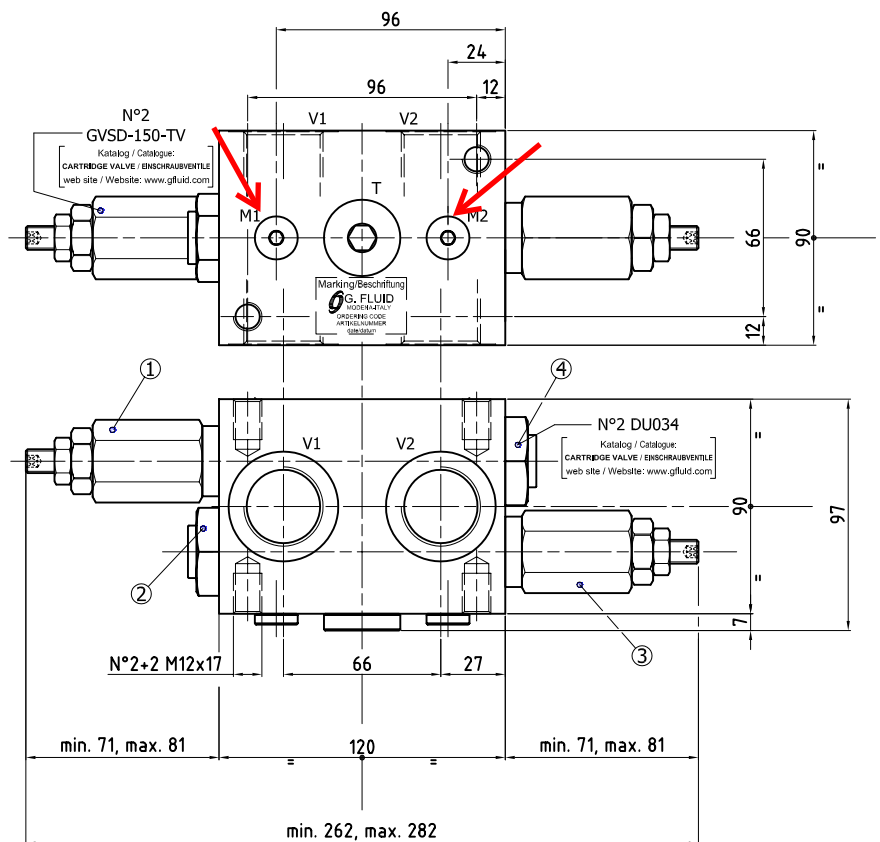
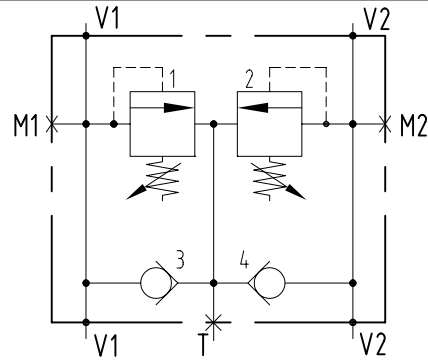
Max operating pressure Maximaler Betriebsdruck	21 MPa-2987 psi (Alloy/Alumin.) 35 MPa-5076 psi (Zincoated Steel/Verzink. Stahl)
Max flow Volumenstrom	150 l/min 39.6 gpm
Temperature range Betriebstemperatur	-20°/80°C
Filtration Filtergrad	40µ

Diagram/Diagramm

Adjustment options/Einstellung

leakproof socket screw/ leckölfreie Regulierungsschraube


0

closure cap/Verschlusskappe


1

ORDERING CODE - ARTIKELNUMMER
20535310 01

Port size/Gewinde				Adj. range Regelbereich	std setting Standardeinst.	Pressure increase MPa/turn Drucksteigerung MPa je Schraubendrehung	Adjustment options Einstellung		Material		Weigth Gewicht	
V1, V2	T	M1, M2	0				1	Material	Weight			
5 G 1"	G 3/4"	G 1/4"	1 0.5-5 MPa	5 MPa	0.4	0 leakproof socket screw leckölfreie Regulierungsschraube	0 Alloy/Aluminium	2.8 kg				
6 G 1 1/4"	G 3/4"	G 1/4"	2 4-10 MPa	10 MPa	2.3	1 handknob and locknut Handrad und Mutter	1 Zincoated Steel/ Verzinkter Stahl	7.6 kg				
			3 7-21 MPa	20 MPa	6.5							
			4 13-35 MPa	35 MPa	6.5							